

---

# CUSP West Annual Meeting

Welcome!

June 20, 2023

---



# A Perspective on Energy Production

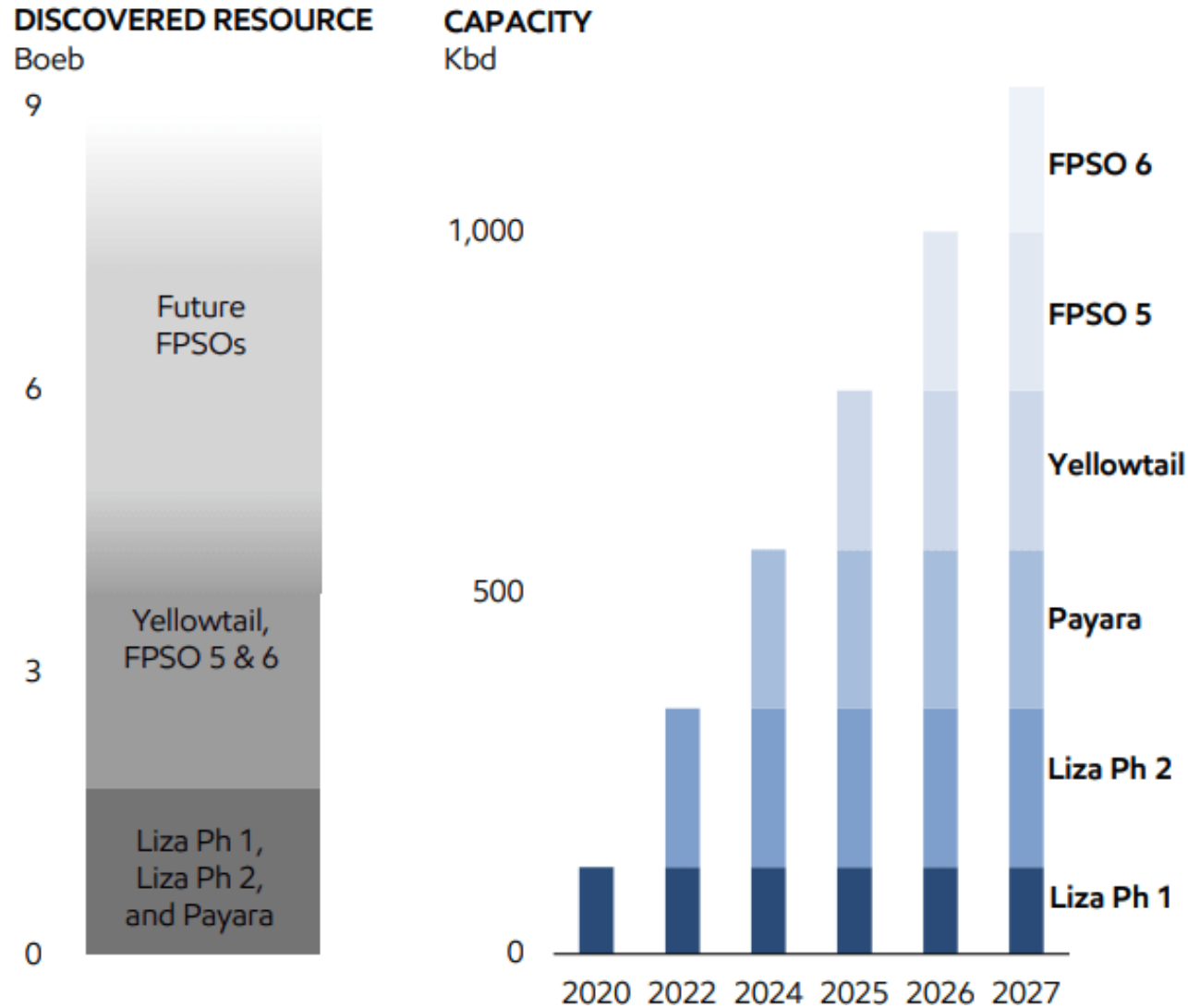


Payara's *Prosperity* FPSO



<https://corporate.exxonmobil.com/Locations/Guyana/Guyana-project-overview#LizaPhase2ProjectDescription>

# A Perspective on Energy Production



Source: 2021 ExxonMobil Investor Day Presentation



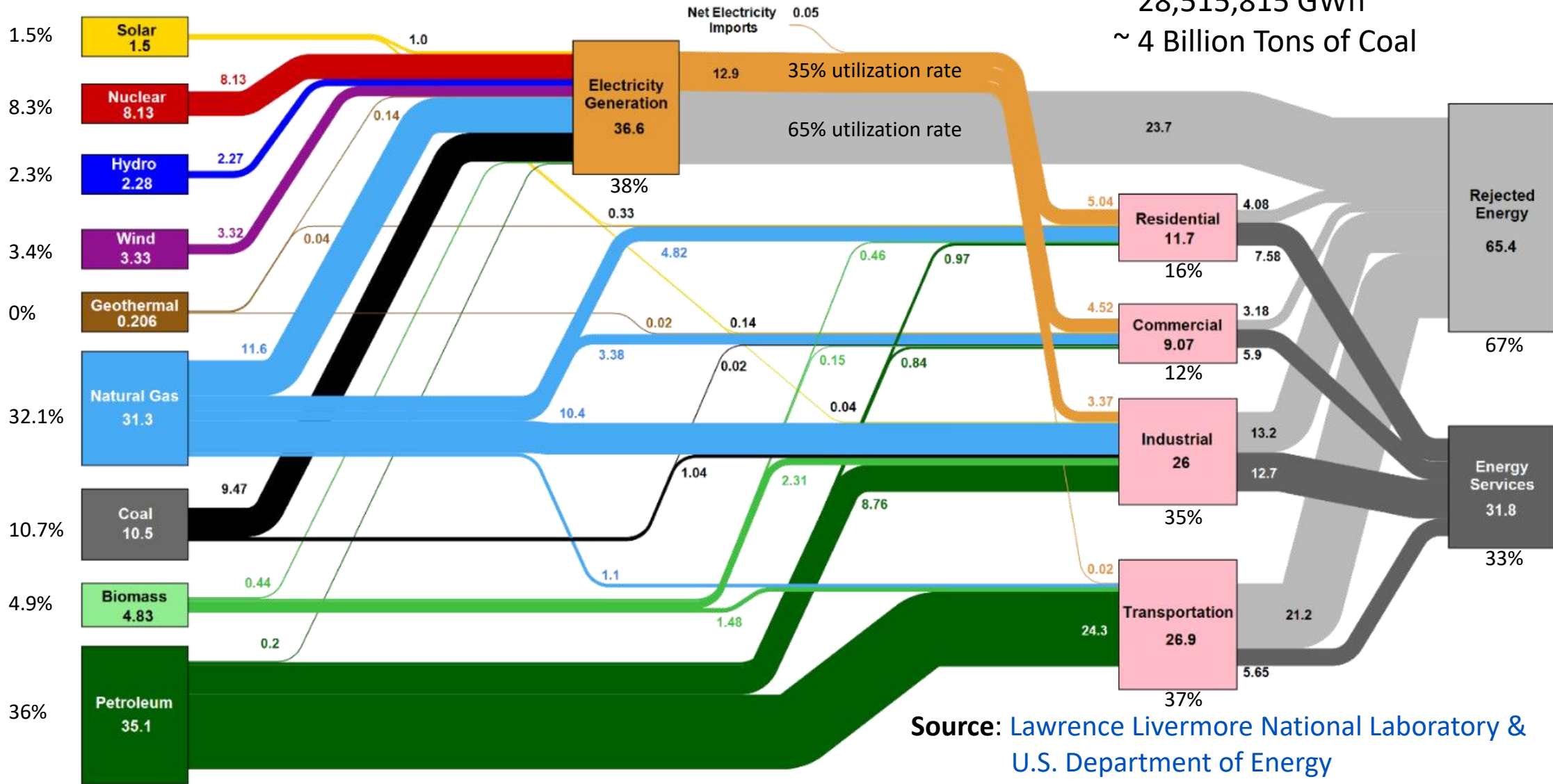
# Guyana's Goal: Produce Energy & Remain -CO<sub>2</sub>



# U.S. Integrated Energy Systems (2021)

Estimated U.S. Energy Consumption (2021) ~ 97.3 Quadrillion BTU

97.3 Quadrillion BTU  
~ 28,515,815 GWh  
~ 4 Billion Tons of Coal

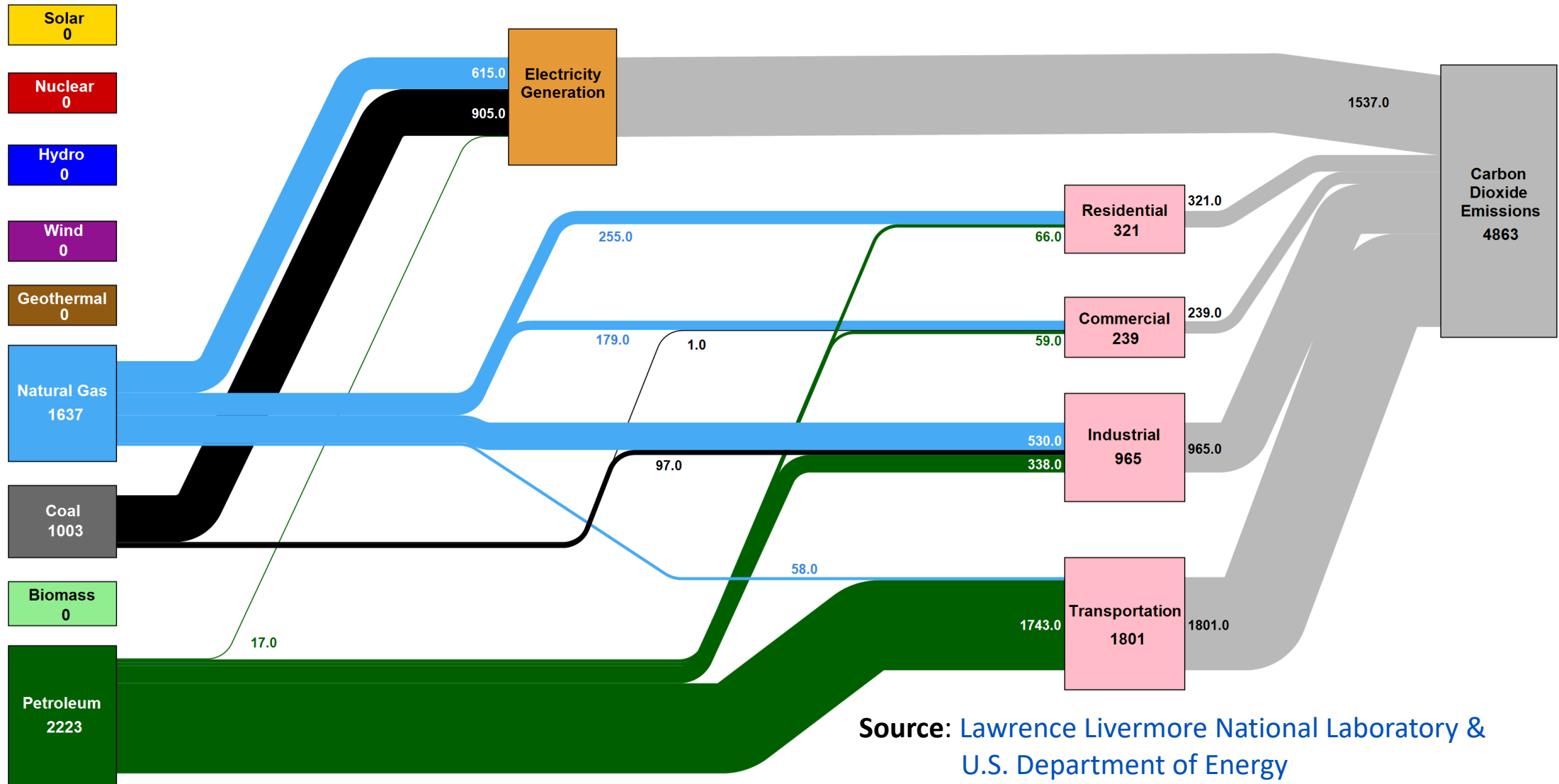


Source: Lawrence Livermore National Laboratory & U.S. Department of Energy



# U.S. Mix → Carbon Dioxide Emissions

Estimated U.S. Energy Consumption (2021) ~ 97.3 Quadrillion BTU → Produced 4,863 million metric tons of CO<sub>2</sub>

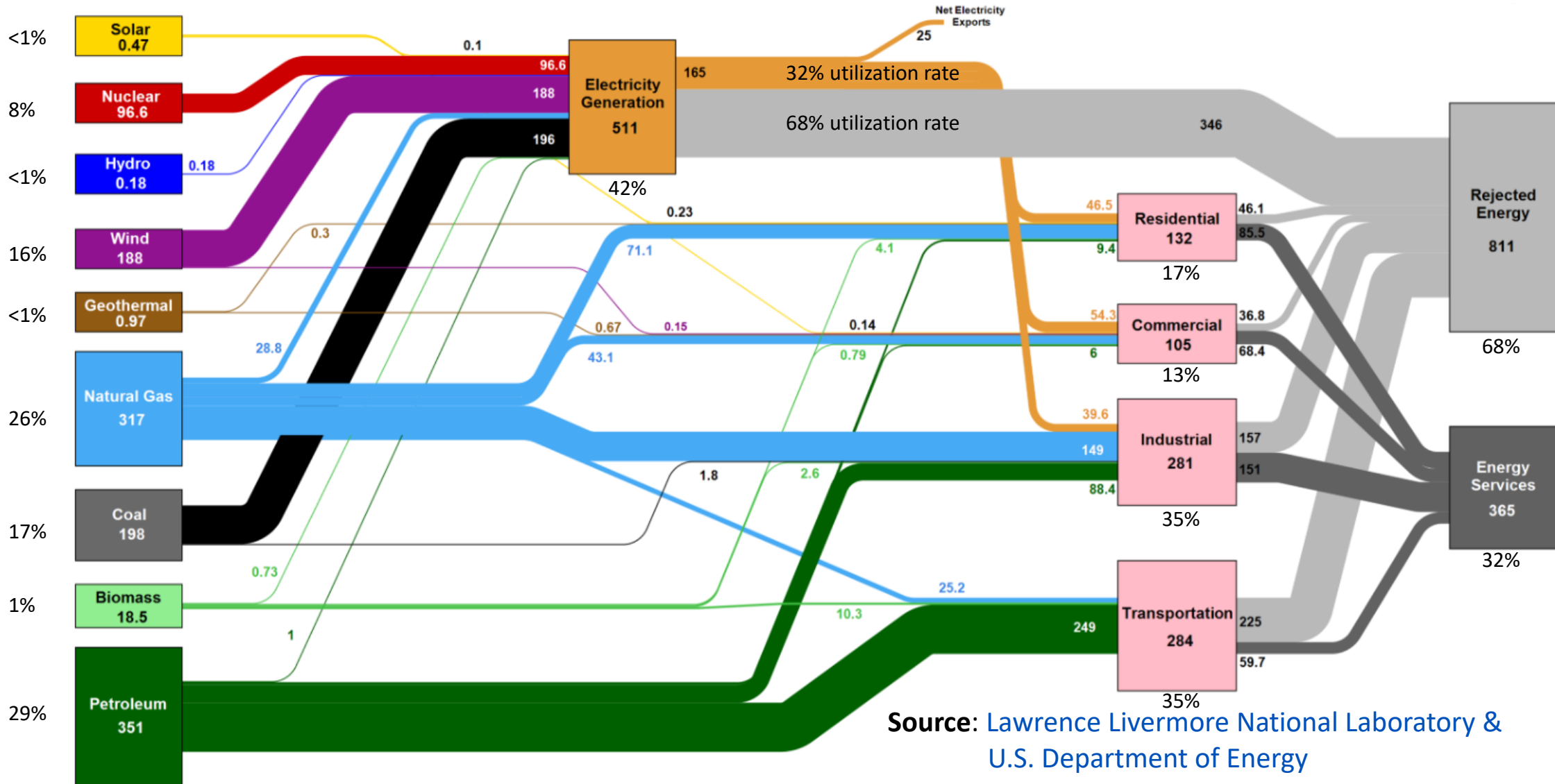


Source: Lawrence Livermore National Laboratory & U.S. Department of Energy

# Kansas' Integrated Energy Systems (2019)

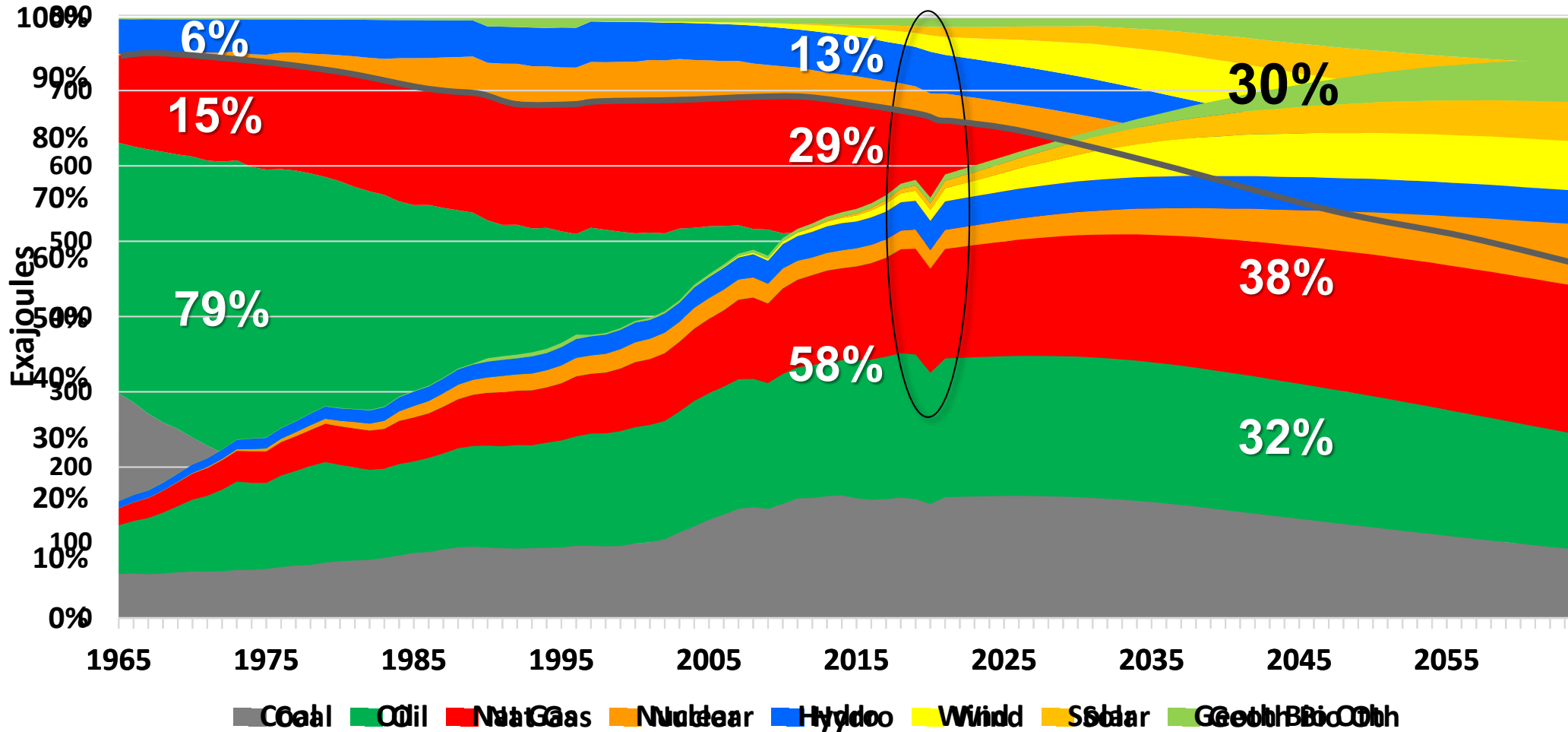
3500 BTU = 1 KWh

1200 Trillion BTU ~ 351,685 GWh




Source: Lawrence Livermore National Laboratory & U.S. Department of Energy

# Global Energy Mix



Data: BP Statistical View of World Energy (2020). Analysis Tinker 2022





WSJ

The porous rock deep under Dennis Dugat's Texas farm attracted energy giants seeking to use it for carbon sequestration.

## New Land Grab by Oil Giants Is Deep Underground

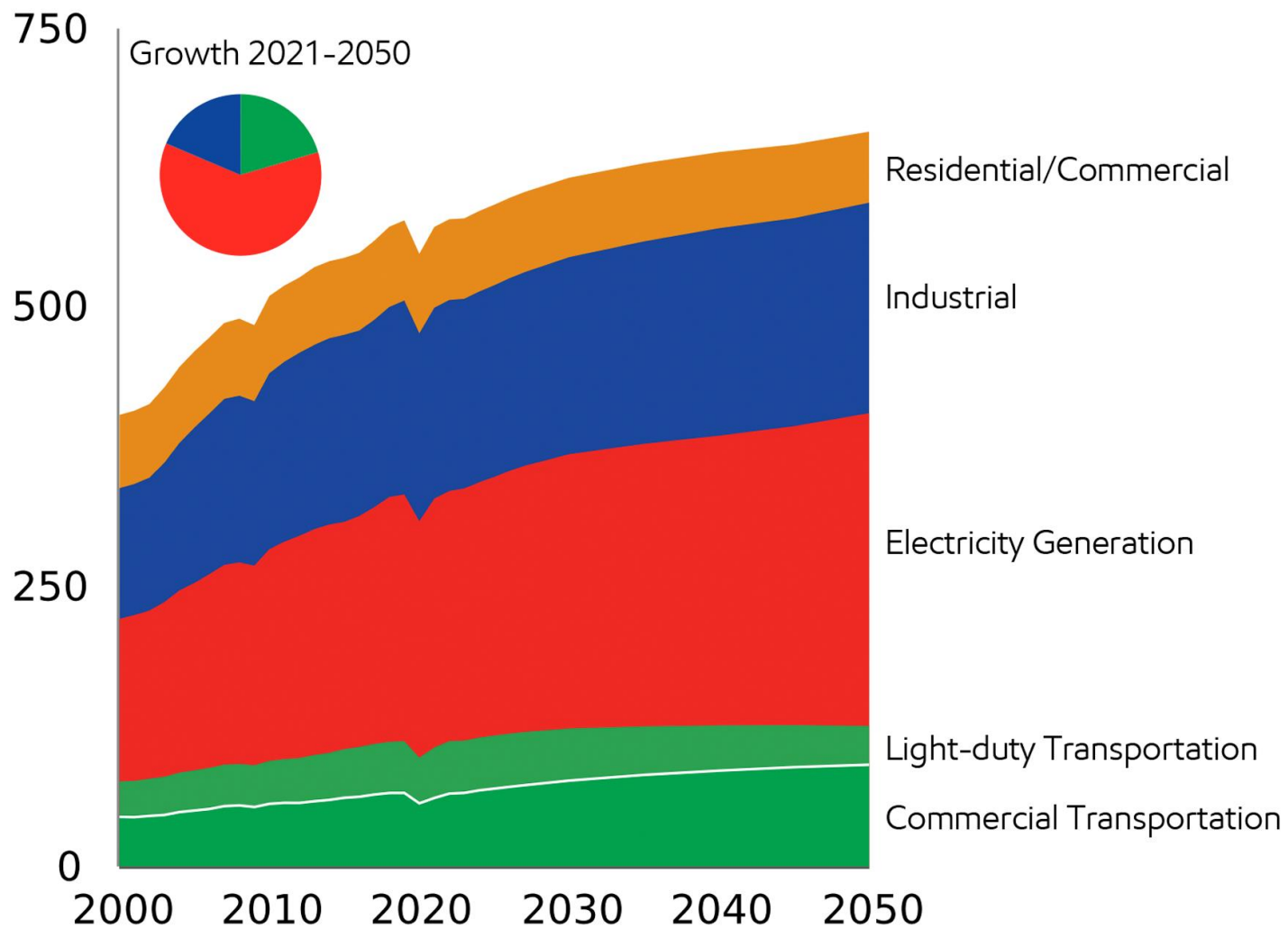
Companies are shelling out big dollars to get rights to subsurface holes where they hope to store carbon dioxide

By [Phred Dvorak](#) [Follow](#) | *Photographs and video by Mark Felix for The Wall Street Journal*

June 19, 2023 at 9:00 am ET

- The scale of the challenge ahead of us is enormous
- Carbon management, along with water resources management, will drive economies for generations
- Energy portfolio expansion is a highly integrative field
- We're just at the very beginning





Source: ExxonMobil outlook for Energy:

<https://corporate.exxonmobil.com/energy-and-innovation/outlook-for-energy/energy-demand?print=true#Transportation>